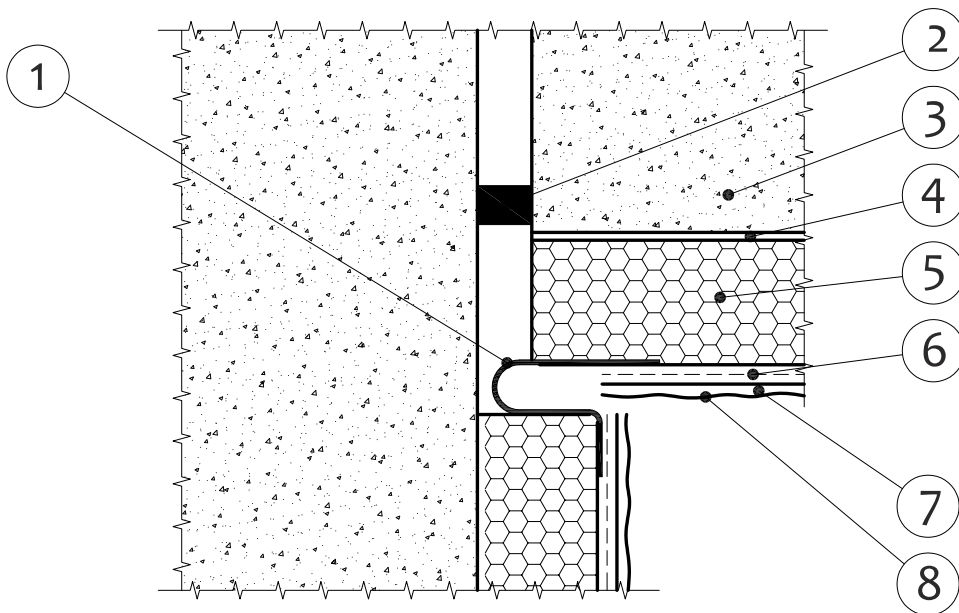


1. Movement Bead
2. Backing Rod
3. Blockwork
4. Sempre TS-100 Adhesive
5. Thermal Insulation
6. Sempre Reinforcing Layer
7. Sempre Primer
8. Sempre Finish Coat



1. Movement Bead
2. Backing Rod
3. Blockwork
4. Sempre TS-100 Adhesive
5. Thermal Insulation
6. Sempre Reinforcing Layer
7. Sempre Primer
8. Sempre Finish Coat

Kilmorna, Listowel
 Co. Kerry
 Tel. (068) 304 35
 Mobile: 087 413 55 25
 E-mail: info@semprertherm.ie
 www.semprertherm.ie



These drawings are the exclusive property of Sempre Therm Ireland Ltd.
 Any reproduction without prior written authority is strictly prohibited.
 Do not scale or copy drawings. Copyright © 2012.

Title: Detail 06: Movement Beads			
Scale: NTS	Drawn by: A.L.	Approved by: P.T.	Date: 06.09.2012
Project: Electric Ireland & TLI		Drawing No. 06.01.12	Revision: 09/12
Certified by:		