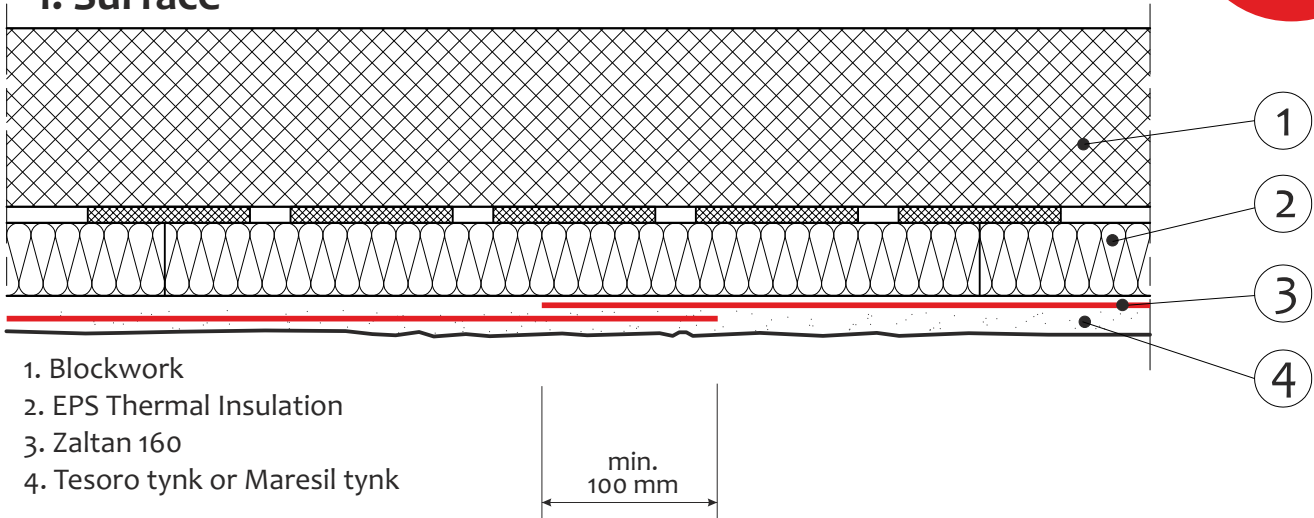




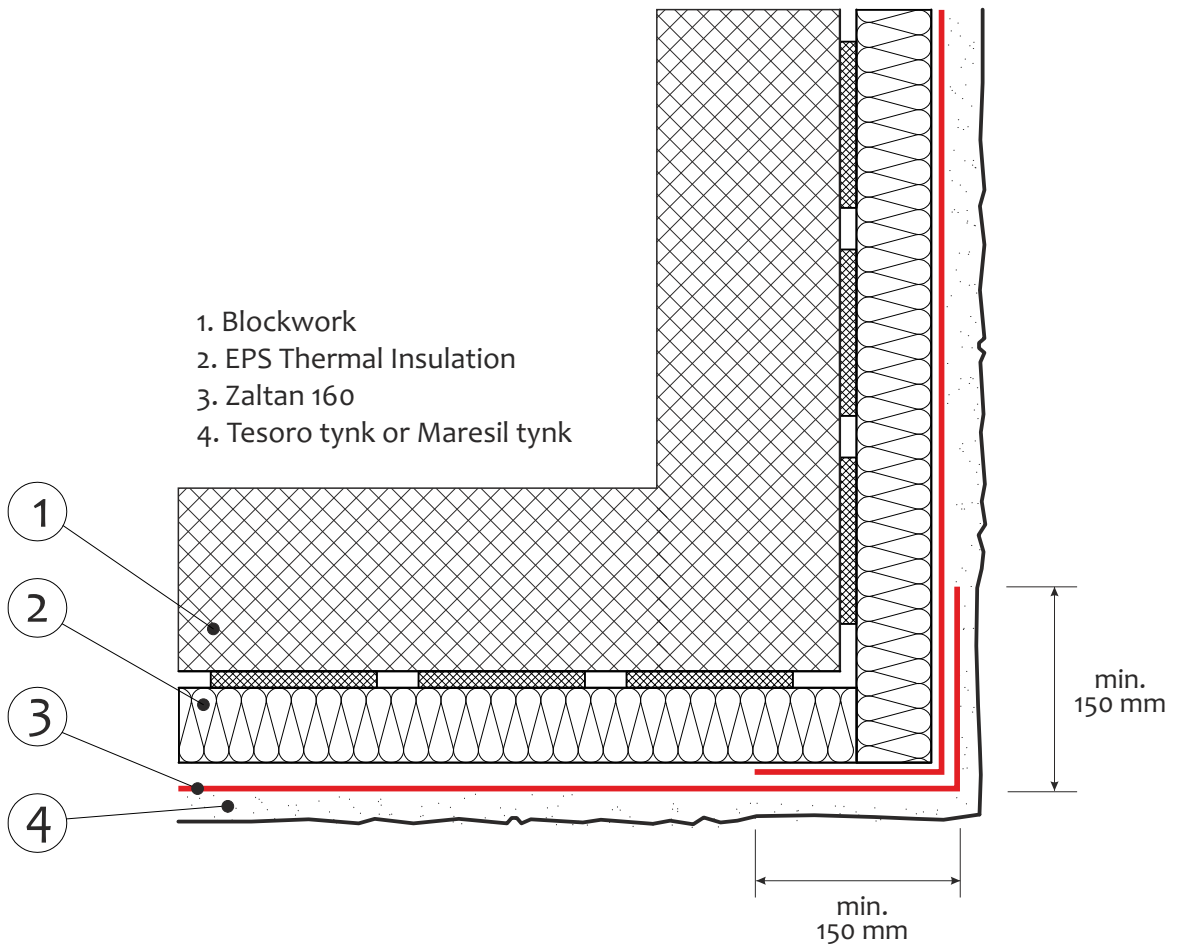
## 1. Surface



- 1. Blockwork
- 2. EPS Thermal Insulation
- 3. Zaltan 160
- 4. Tesoro tynk or Maresil tynk

min.  
100 mm

## 2. Corner



- 1. Blockwork
- 2. EPS Thermal Insulation
- 3. Zaltan 160
- 4. Tesoro tynk or Maresil tynk

min.  
150 mm

min.  
150 mm

Kilmorna, Listowel  
Co. Kerry  
Tel. (068) 304 35  
Mobile: 087 413 55 25  
E-mail: info@sempretherm.ie  
www.sempretherm.ie



These drawings are the exclusive property of Sempre Therm Ireland Ltd.  
Any reproduction without prior written authority is strictly prohibited.  
Do not scale or copy drawings. Copyright © 2012.

Title:  
Detail 18: Overlapping of mesh on the surface and corner of ETICS

Scale: NTS	Drawn by: A.L.	Approved by: P.T.	Date: 06.09.2012
---------------	-------------------	----------------------	---------------------

Project: Electric Ireland & TLI	Drawing No. 18.01.12	Revision: 09/12
------------------------------------	-------------------------	--------------------

Certified by:

